

Importance of Rapid Development in any opening:

White developed the Bishop pair in the wake of center advance.

Black's Queen rush only provided White with a hidden, future tempo along the c-file when pawn advanced to c4

1.)

Importance of the Right Moment for a wing advance:

The Bishop pair prevents Black advance in the center while keeping pressure on the Kingside in support of a pawn advance.

Isolated Queenside pawns hamper any advance there.

2.)

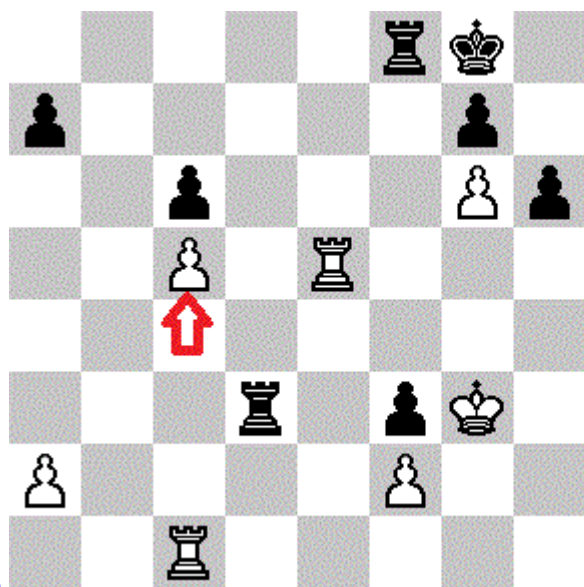
Chess As The Game of Manoeuvring:

In this position White King refuses exposure by not capturing the Black pawn on f3 in order to leverage his slight positional advantages, such as

- 1) the pawn on g6
- 2) Bishop on c2
- 3) pawn on c4

Black must capture the f6 pawn first allowing White to move Bishop to b1

3.)

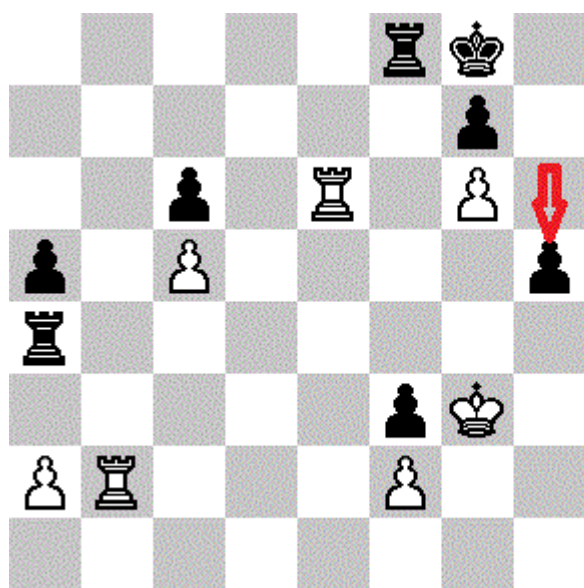


Endgame tactics:

The best move for White is the pawn advance on c-file because it conquers space on the board and solidifies White control in the center - which is important even in the endgame!

White's pawn on g6 nearly completely paralyzes Black's Kingside pawn majority.

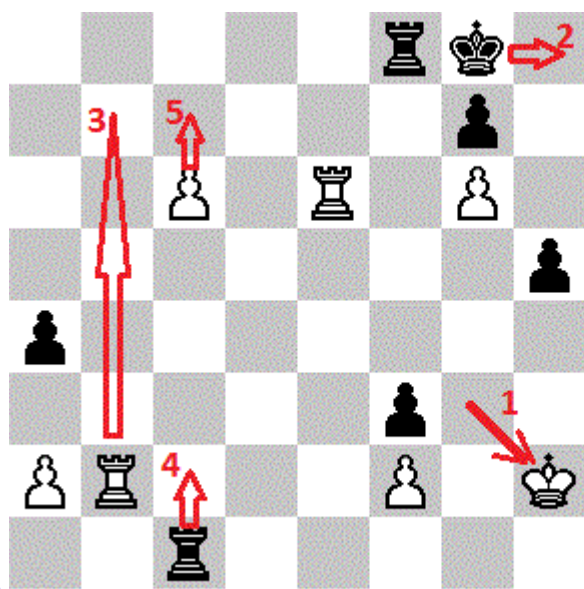
4.)



The Moment of Defeat (the fruits of White's proper manoeuvring labor in the past):

Black cannot defend his vital pawn on c6 because of the Rook sacrifice for White: Re6 - Rc8 Rxe6 !! {if RxR ?? - then Rb8+ (mate in 2)} and Black is late with the idea of Rb4. so, h5 represents a sign of desperation

5.)



Technical Mop-up:

White moves his King to the second rank in order to prevent the Black Rook from returning back to harass the King.

Black is going into the terminal Zugzwang condition where any move made worsens the position. After the 5th move Black Rook cannot save by capturing either on a2 or f2

6.)