



www.swfloridachessclub.com

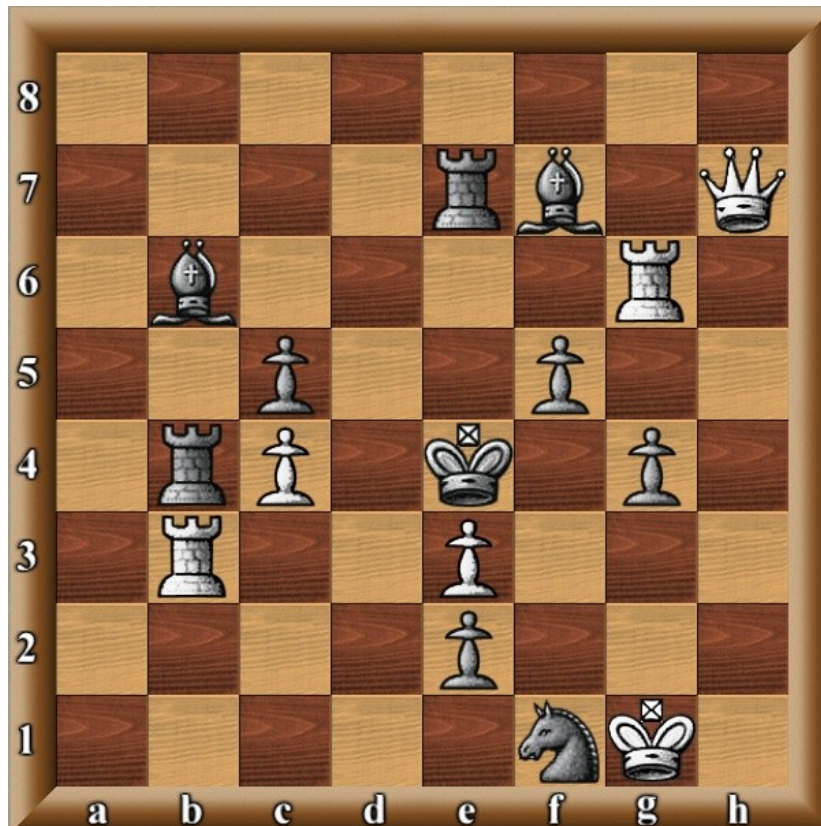
SW Florida Chess Club

Contact: Greg Gordon

Email: swflchess@yahoo.com



Solution to Ben's Mate in 11 Problem



- Play continues:
- | | |
|----------|---|
| 1. Qh1+ | Ke5 |
| 2. Qh8+ | Ke4 |
| 3. Qa8+ | Ke5 |
| 4. Qa1+ | Ke4 |
| 5. Qb1+ | Ke5 (if...Kf3; 6.Qxf5+ Kg3; 7.Qxg4 mates) |
| 6. Qb2+ | Ke4 |
| 7. Qc2+ | Ke5 |
| 8. Qc3+ | Ke4 |
| 9. Qd3+ | Ke5 |
| 10. Qd6+ | Ke4 |
| 11. Qf4+ | Mate |

Fascinating how the Queen gets to all four corners of the chess board, inexorably making her way down to the f4-square for mate ... Ben Bentrup.

